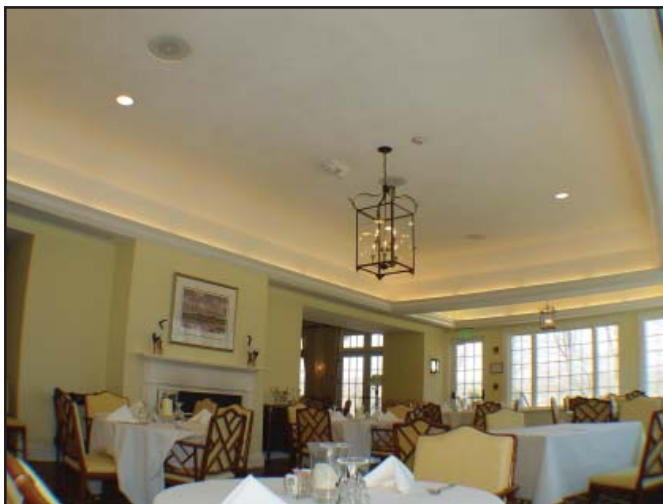


AN ACOUSTICAL FINISH CASE STUDY FROM INTERNATIONAL CELLULOSE



PROJECT	Bedens Brook Club Skillman, NJ
ACOUSTIC CONSULTANT	Ostergaard Acoustical Assoc. West Orange, NJ
DETAILS	SonaKrete 2,600 sq ft Standard White @ 1/2"

The dining areas of the Bedens Brook Country Club were scheduled for total renovation. A primary concern was to find a way to quiet the unacceptable noise levels. ***“Club dining rooms are always an acoustical challenge.”*** says Ed Clark, PE, a principal with the respected acoustical consulting firm of Ostergaard Acoustical Associates of West Orange, New Jersey. ***“Voice levels can easily get out of control in a crowded dining room. An effective sound absorbing ceiling finish was needed at the Bedens Brook Club where we measured mid-frequency reverberation times of about 1 second in the dining rooms. SonaKrete on the hard ceilings was a logical choice. SonaKrete is sound absorbant over a wide frequency range, including the critical high frequencies, and it does not change the look of the ceilings.”***



Because of concerns about acoustic performance, appearance and cost, management decided to treat only the porch dining area. No sooner was that area completed than the membership eagerly decided to also authorize treating the family dining area. SonaKrete, a LEED Certified, spray-applied, hand trowelled, premium acoustic finish, eliminates the popcorn look of many other “similar” spray acoustic products. When it comes to durability and light reflectivity, SonaKrete is in a league all it’s own. Also, it takes less time to install SonaKrete. That equates to a lower cost than traditional sprayed acoutic plaster systems.



SonaKrete is ideal for any architectural space requiring both acoustic performance and beautiful aesthetics. SonaKrete is available in Standard White and Arctic White. Custom matched integral colors are also available. SonaKrete is also ideal for worship centers, museums, libraries, offices, lobbies, boardrooms, correctional facilities, and wherever performance, appearance and durability call for only the best. Contact Intenational Cellulose at **1-877-790-9367** for samples and complete technical data or visit our website at **www.sona-crete.com**. Would you like to learn more? ICC even offers architects a Lunch-N-Learn AIA/CES program on the subject of Spray-Applied Acoustical Finishes.

**Other Custom Integral Color
SonaKrete Applications**



Valdosta University
Valdosta, GA



Lunello Restaurant
Cedar Grove, NJ



Johnson & Wales University
Providence, RI



Badger Mutual Insurance
Milwaukee, WI



SonaKrete is manufactured with a minimum of 80% recycled content which makes it ideal for "Sustainable Design" LEED projects.

**Section 09 83 00
SonaKrete™ Acoustical Finish
Specification Guide**

INTRODUCTION

This specification is designed to enable the design professional or specification writer to select the NRC value that best suits the project's requirements. Please edit the NRC value in section 3.03 Line A.

PART 1 – GENERAL

1.01 Section Includes

- A. SonaKrete™ acoustical finish system.

1.02 Project Scheduling

- A. Clips, hangers, supports, sleeves and other attachments to the substrate are to be placed by other trades prior to the application of acoustical finish.
- B. Ducts, piping, conduit or other suspended equipment shall not be positioned until after the application.

1.03 Submittals

- A. Submit one copy of the manufacturer's ISO 9001:2000 Certification.
- B. Submit 2 copies of the test reports indicating compliance with the following:
 - 1. NRC values per ASTM C-423 conducted by a NVLAP certified testing laboratory:

Inches	125Hz	250Hz	500Hz	1kHz	2kHz	4kHz	NRC
.25"	.01	.07	.39	.69	.83	.87	.50
.375"	.06	.11	.46	.77	.84	.89	.55
.50"	.01	.16	.49	.89	1.03	.97	.65
.75"	.25	.48	.81	.85	.85	.94	.75

- 2. Class 1 Fire Rating per ASTM E-84

- C. Submit one copy of the manufacturer's written certification that the materials contain no asbestos, fiberglass or other man-made mineral fibers.
- D. Applicator's certificate: Manufacturer's approval of applicator.
- E. Submit 2 8"x8" samples from the manufacturer.

1.04 Quality Assurance

- A. The Manufacturer must be ISO 9001:2000 Certified.
- B. The Applicator: Must be approved by International Cellulose in performing work of this Section.
- C. Field samples:
 - 1. Construct one field sample panel, 10'x10', to specified thickness to illustrate texture and color.
 - 2. Prepare the sample using the same tools and techniques to be used for the actual application.
 - 3. Locate the sample where directed.
 - 4. The applicator will inform the project architect when the sample is ready for review.
 - 5. Do not start the actual application until the architect has approved the field sample.

1.05 Delivery, Storage and Handling

- A. Deliver in original, unopened containers bearing name of manufacturer and product identification.

- B. Store materials dry, off ground and under cover.
- C. Protect liquid adhesive, sealers & additives from freezing.

1.06 Project Conditions

- A. The air temperature in the room must be a minimum of 40° F and maintained until the material has cured.
- B. The substrate temperature must be a minimum of 40° F.
- C. The General Contractor to provide ventilation to ensure proper curing.

PART 2 – PRODUCTS

2.01 Acceptable Manufacturers

- A. International Cellulose Corporation
12315 Robin Boulevard
Houston, Texas 77045
877-790-9367
FAX: (713) 433-2029

2.02 Materials

- A. SonaKrete™ Acoustical Finish System
- B. SonaPrep
- C. Water – Potable
- D. Color shall be:
 - White Arctic White
 - Custom Color _____

PART 3 – EXECUTION

3.01 Examination

- A. Examine the substrate surfaces and report unsatisfactory conditions in writing. Do not proceed until unsatisfactory conditions are corrected.
- B. Drywall substrates require a minimum Level 3 finish and are to be sealed with SonaPrep.
- C. Plaster substrates require a brown coat finish and are to be sealed with SonaPrep.
- D. Consult International Cellulose for other substrates.

3.02 Preparation

- A. Provide masking, drop cloths or other satisfactory coverings for materials/ surfaces that are not to receive acoustical finish.
- B. Coordinate the installation of the acoustical finish with work of other trades.

3.03 Application

- E. Install to a thickness to achieve an NRC of _____.
- F. Install the acoustical finish according to the manufacturer's written instructions.
- G. After achieving the required thickness and while still wet, float the material to match the approved field sample.
- H. Cure the material with continuous natural or mechanical ventilation.

3.04 Protection

- A. Protect finished installation under provisions of Division 1.

End of Section



**INTERNATIONAL
CELLULOSE
CORPORATION**

12315 Robin Blvd.
Houston, TX 77045
877-790-9367
713-433-2029 FAX
www.sonakrete.com